



A new era of low-cost colour,
high productivity, and strong security

HP PageWide Color 755dn
HP PageWide Color MFP 774dn and 779dn



Low cost for colour



Minimal interruptions.
Maximum uptime.



Strong security designed to
detect and stop attacks

Low cost for colour



Colour printing is within the budget of every business with HP PageWide Technology. Print professional-quality colour for a breakthrough low cost on sizes up to 305 x 457 mm (12 x 18 inches)—results you expect from HP for an exceptional value you can rely on.



Breakthrough low-cost colour

Get the professional quality you expect for a game-changing value—HP PageWide Technology delivers a low cost per colour page.

Original HP PageWide cartridges provide the consistent printing performance, quality, and affordability businesses demand. Quickly replace cartridges—simply push twice to insert or remove. Optional high-yield cartridges offer an even better value, so you can print more pages and replace cartridges less often.¹



General Office mode for faster, lower-cost prints²

Equip employees to speed through tasks with high-performance, professional-quality printing. Print even faster—and save even more per page—by setting your printer or MFP to General Office (GO) mode.² Get the quality your business needs while helping to reduce printing costs.

Minimise interruptions in productivity with an HP PageWide device designed with the fewest parts in its class for the least maintenance.³



Best-in-class energy efficiency⁴

Help keep energy costs down with the most efficient device in its class.⁴ HP PageWide Technology conserves resources without compromising performance.

This device meets rigorous standards for ISO class 5 cleanrooms—perfect for sensitive environments. Keep noise to a minimum with a device designed to be quiet. Place it near people without disrupting work.

Help reduce your environmental impact. Consume up to 50% less paper, with automatic two-sided printing. Easily recycle your Original HP cartridges at no charge through HP Planet Partners.⁵

Minimal interruptions. Maximum uptime.

Annoying interruptions and complex maintenance can slow down printing and, ultimately, the pace of business. Avoid pauses in productivity with an HP PageWide device designed for maximum uptime—so you can count on reliable results day in and day out.

Move business forward

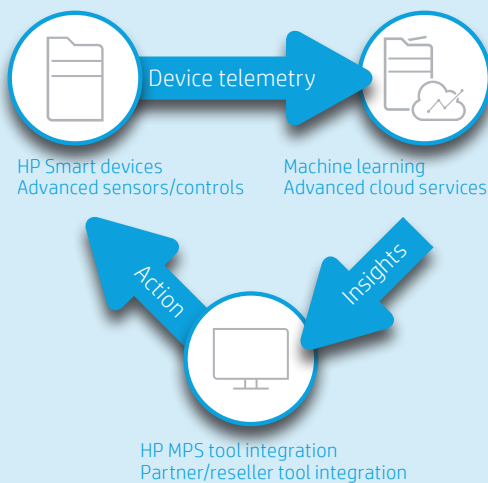
Print up to 50% faster than the competition⁶—as fast as 65 pages per minute (ppm), GO mode (MFP 779dn).⁷ The MFP 779dn model wakes up and prints in as fast as 7.3 seconds from ready (black, A4), so your pages are ready right when you need them.



Preview and edit scans, adjust images, and launch print, scan, copy, and fax jobs⁸—all at the 20.3 cm (8.0-inch) colour touchscreen (MFP 779dn).⁹ For more information, see Appendix A on page 20.

Minimise downtime

HP Smart Device Services (SDS) remote diagnostic insights and remediation capabilities help minimise downtime. HP devices are smart and communicate their health before the device stops. SDS helps optimise HP devices for your usage environment with machine-to-machine learning, predictive analytics, and advanced device controls that can be made remotely.



SDS keeps your data and network secure—it only tracks device ID and telemetry data, and it does not collect customer names, user data, or job content.

SDS uses the same secure network protocols used by web banking applications, Microsoft Outlook, and Office 365.

Expand your capacity

Equip this device with a variety of paper-handling accessories to meet the needs of your office. Optional trays support media sizes up to 297 x 432 mm (11.7 x 17 inches), including a 550-sheet paper tray, 550-sheet paper tray and stand, and 3x550-sheet paper tray and stand.¹⁰



Print up to 4,650 pages without reloading paper, using the optional 4,000-sheet high-capacity input (HCI) tray and stand, with support for A4 (letter) size.¹¹

Strong security designed to detect and stop attacks



HP Print Security isn't just about securing printers. It's about helping to secure your network with real-time threat detection, automated monitoring, and software validation—designed to detect and stop an attack as it happens.



Always on guard

Count on strong protection for devices, data, and documents with printer security from HP.

A suite of embedded security features, including secure boot and secure firmware, preserve sensitive data and help protect the printer from being the entry point for attacks.

Help ensure important documents and confidential information stay secure. Enter a PIN or use an optional proximity card reader¹² at the device to retrieve your print job.

Thwart potential attacks by receiving instant notification of security issues, so immediate action can be taken. This device works with tools like Splunk, ArcSight, McAfee, and SIEMonster.



Take security to the next level

Help protect this device with more than 135/200 (printers/MFPs) embedded security features.¹³

Easily deploy and integrate HP and third party solutions with the HP Open Extensibility Platform (OXP). Add features such as card readers and more through the Hardware Integration Pocket (HIP) (supported on all models except the 774dn).¹⁴

Further safeguard data stored on the device, using the standard HP Trusted Platform Module (MFP 774dn and 779dn models only).¹⁵



Expand capabilities with top-flight flexibility

Centralise control of your printing environment with HP Web Jetadmin—and help build business efficiency.¹⁶ Optional HP JetAdvantage Security Manager offers an effective, policy-based approach to help secure HP printing and imaging devices.¹⁷ Easily set security configuration policies and automatically validate settings for every HP printer and MFP in your fleet.

HP JetAdvantage Secure Print¹⁸ and HP Access Control (HPAC) help secure documents by requiring authentication to release print jobs. In addition, extend capabilities and easily customise with HPAC—integrate job accounting, manage rights, and establish quotas for things such as colour use.¹⁹ Save IT time and make printing easy for the entire enterprise by using a single driver for all HP devices.²⁰

► For more information

Fleet management

HP Web Jetadmin visit: hp.com/go/wja

Solution brief: <http://h20195.www2.hp.com/V2/GetPDF.aspx/4AA5-2719EEW.pdf>

Video: <http://hp.brightcovegallery.com/solutions/detail/video/4271055504001/>

HP Universal Print Driver visit: hp.com/go/upd

Solution brief: <http://h20195.www2.hp.com/V2/GetPDF.aspx/4AA2-4781EEW>

Security

HP JetAdvantage Security Solutions visit: hp.com/go/printsecurity

Solution brief: <http://h20195.www2.hp.com/V2/GetPDF.aspx/4AA3-1295EEW.pdf>

Video: <http://hp.brightcovegallery.com/products/detail/video/4270905124001/>

HP JetAdvantage Security Manager visit: hp.com/go/securitymanager

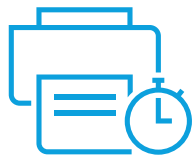
Brochure: <http://h20195.www2.hp.com/V2/GetPDF.aspx/4AA3-9275EEW.pdf>

Video: <http://hp.brightcovegallery.com/products/detail/video/4270837770001/>

Give workgroups the tools they need



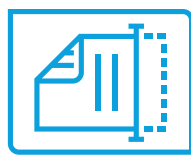
Accelerate workflow and enhance productivity. With the MFP models, complete scan jobs quickly—up to 60 ppm,²¹ simplex and up to 120 ipm,²¹ duplex. Easily share resources and connect people throughout your organisation.



Complete tasks at the device

Preview and edit scans, adjust images, and launch print, scan, copy, and fax³ jobs—all at the intuitive colour touchscreen.

Save time with a walk-up USB port²² that quickly recognises, formats, and prints the Microsoft Word and PowerPoint[®] files businesses use every day.²³



Scan quickly and easily

With the MFP 774dn and MFP 779dn models, turn stacks of paper documents into digital files. Load up to 100 pages into the automatic document feeder (ADF) for fast, unattended scanning.^{24,25} Accelerate workflow with single pass, two-sided scanning up to 60 ppm, simplex, and up to 120 images per minute (ipm), duplex.²¹

Scan documents directly to Microsoft[®] SharePoint[®], plus email, USB, and network folders.²⁶



Keep your office connected

Built-in Ethernet and optional wireless capabilities on all models let you easily access, print, and share resources on a network.²⁷

Detect nearby printers from a mobile device, quickly connect, and easily print with optional Bluetooth[®] Low Energy connectivity.²⁸

Get to know the HP PageWide Color 755dn printer



At a glance



Model (product number)	755dn (4PZ47B)
Functions	Print
Print speeds (black and colour, A4 and letter) ⁷	Up to 35/55 ppm, Professional/GO mode
Automatic two-sided printing	✓
Control panel display	10.9 cm (4.3-inch) pivoting colour touchscreen
Hardware Integration Pocket ¹⁴	✓
Paper input trays (standard)	100-sheet multipurpose tray 1, 550-sheet tray 2
Input capacity (standard/maximum ¹¹)	Up to 650/4,650 sheets
Output capacity	Up to 300 sheets
Optional wireless printing ²⁷ /Bluetooth Low Energy ²⁸	✓

HP PageWide Color 755dn printer – Configuration

Select one category of input accessory:



550-sheet Paper Tray (A7W99A)

- Select only one
- Media up to 297 x 432 mm
- Media weight: 60 to 220 g/m²



550-sheet Paper Tray and Stand (W1B50A)

- Select only one
- Media up to 297 x 432 mm
- Media weight: 60 to 220 g/m²



3x550-sheet Paper Tray and Stand (W1B51A)

- Select only one
- Media up to 297 x 432 mm
- Media weight: 60 to 220 g/m²



4,000-sheet HCI Paper Tray and Stand (W1B52A)

- Select only one
- Supports A4-size media
- Media weight: 60 to 220 g/m²

Standard on 755dn:

300-sheet output bin

100-sheet multipurpose tray 1

- Media up to 305 x 457 mm
- Media weight: 60 to 220 g/m²

550-sheet tray 2

- Media up to 297 x 432 mm
- Media weight: 60 to 220 g/m²



Get to know the HP PageWide Color MFP 774dn and 779dn

HP PageWide Color MFP 779dn shown



Series at a glance



Model (product number)	774dn (4PZ43B)	779dn (4PZ45B)
Functions	Print, scan, copy, optional fax ⁸	Print, scan, copy, optional fax ⁸
Print speeds (black and colour, A4 and letter) ⁷	Up to 35/55 ppm, Professional/GO mode	Up to 45/65 ppm, Professional/GO mode
Scan speeds (black and colour, A4 and letter) ²¹	60 ppm/120 ipm, simplex/duplex	60 ppm/120 ipm, simplex/duplex
Hardware Integration Pocket ¹⁴	Not available	✓
Control panel display	10.9 cm (4.3-inch) pivoting colour touchscreen	20.3 cm (8.0-inch) pivoting colour touchscreen
Input capacity (standard/maximum ¹¹)	Up to 650/4,650 sheets	Up to 650/4,650 sheets
Output capacity	Up to 500 sheets	Up to 500 sheets
Optional wireless printing ²⁷ /Bluetooth Low Energy ²⁸	✓	✓

HP PageWide Color MFP 774dn and 779dn – Configuration

Select one category of input accessory:



550-sheet Paper Tray (A7W99A)

- Select only one
- Media up to 297 x 432 mm
- Media weight: 60 to 220 g/m²



550-sheet Paper Tray and Stand (W1B50A)

- Select only one
- Media up to 297 x 432 mm
- Media weight: 60 to 220 g/m²



3x550-sheet Paper Tray and Stand (W1B51A)

- Select only one
- Media up to 297 x 432 mm
- Media weight: 60 to 220 g/m²



4,000-sheet HCI Paper Tray and Stand (W1B52A)

- Select only one
- Supports A4-size media
- Media weight: 60 to 220 g/m²

Standard dn models

- 100-sheet ADF
- Single-pass, two-sided scanning
 - Up to 60 ppm/120 ipm, simplex/duplex

- 500-sheet output bin
- 100-sheet multipurpose tray 1
- Media up to 305 x 457 mm
 - Media weight: 60 to 220 g/m²

- 550-sheet tray 2
- Media up to 297 x 432 mm
 - Media weight: 60 to 220 g/m²



779dn shown

Paper-handling capabilities

The HP PageWide Color 755dn printer and MFP 774dn and 779dn models may be configured with optional input and finishing accessories described in the tables below. Other optional accessories are included in the Ordering information on page 19.

HP PageWide Color 755dn, MFP 774dn, and MFP 779dn

The 755dn printer and MFP 774dn and 779dn models come standard with a 100-sheet multipurpose tray that supports up to 305 x 457 mm (12 x 18 inches) and one 550-sheet tray that supports up to 297 x 432 mm (11.7 x 17 inches).



550-sheet Paper Tray (A7W99A)

Supports up to 297 x 432 mm (11.7 x 17 inches)

550-sheet Paper Tray and Stand (W1B50A)

Supports up to 297 x 432 mm (11.7 x 17 inches)

3x550-sheet Paper Tray and Stand (W1B51A)

Supports up to 297 x 432 mm (11.7 x 17 inches)

4,000-sheet HCl Paper Tray and Stand (W1B52A)

HCl tray supports A4 (letter)

Optional: These input accessories are optional for all models (only one input accessory may be added)

Maximum input with accessory:¹¹

1,200 sheets

1,200 sheets

2,300 sheets

4,650 sheets

HP PageWide Color 755dn technical specifications

HP PageWide Color 755dn	
Product number	4PZ47B
Functions	Print
Control panel/data entry	10.9 cm (4.3-inch) pivoting colour touchscreen; Easy-access USB port ²²
Print speed (A4 and letter)⁷	
Single-sided	Up to 35/55 ppm, Professional/General Office mode (black and colour)
Two-sided	Up to 24 ipm, Professional mode (black and colour)
First page out	From ready: ²⁹ as fast as 8.2/8.5 seconds (A4/letter, black); as fast as 8.2 seconds (A4/letter, colour) From sleep: ³⁰ as fast as 11.1/11.4 seconds (A4/letter, black); as fast as 7.8/9.5 seconds (A4/letter, colour)
Print resolution	Black: Up to 1200 x 1200 optimised dpi from 600 x 600 input dpi (on Unspecified, Plain, HP Premium Presentation Matte, and HP Brochure Matte); Colour: Up to 2400 x 1200 optimised dpi from 600 x 600 input dpi (on HP Advanced Photo Papers)
Printing features	HP PageWide Technology with pigmented inks, HP EasyColor, print preview, automatic two-sided printing, print multiple pages per sheet (2, 4, 6, 9, 16), collation, booklet printing, cover pages, tray selection, scaling, portrait/landscape orientation, high-quality greyscale and black ink only, General Office/Professional/Presentation dpi print modes
Processor	1.2 GHz
Memory	Standard: 1536 MB; Maximum: 2560 MB ³¹
Storage	eMMC solid state drive (SSD) for printer operating system and job storage
Durability ratings	
RMPV ³²	2,500 pages to as high as 15,000 pages
Duty cycle ³³	Up to 75,000 pages
Media specifications	
Input capacity	Up to 650 sheets (up to 4,650 sheets maximum ¹¹) Tray 1: up to 100 sheets Tray 2: up to 550 sheets
Output capacity	Up to 300 sheets
Two-sided printing	Automatic
Media sizes	Tray 1: A3, A4, A4-R, A5, A5-R, A6, RA3, RA4, SRA4, B4, B5 (JIS), 8K (270 x 390 mm), 16K (195 x 270 mm), 8K (260 x 368 mm), 16K (184 x 260 mm), 8K (273 x 394 mm), 16K (197 x 273 mm), oficio (216 x 340 mm), envelopes (B5, C5, C6); 12 x 18 in, 11 x 17 in, legal, oficio (8.5 x 13 in), letter, letter-R, executive, statement, 5 x 8 in, 5 x 7 in, 4 x 6 in, envelope #10; Custom media sizes: 99.1 x 127 to 304.8 x 457.2 mm (3.9 x 5.83 to 12 x 18 in) Tray 2: A3, A4, A4-R, A5, SRA4, B4, B5 (JIS), 8K (270 x 390 mm), 16K (195 x 270 mm), 8K (260 x 368 mm), 16K (184 x 260 mm), 8K (273 x 394 mm), 16K (197 x 273 mm), oficio (216 x 340 mm); 11 x 17 in, legal, oficio (8.5 x 13 in), letter, letter-R, executive; Custom media sizes: 210.1 x 148.1 to 297.2 x 431.8 mm (8.27 x 5.83 to 11.7 x 17 in) Optional 1x550 tray, 1x550 tray/stand, 3x550 tray/stand: A3, A4, A4-R, A5, SRA4, B4, B5 (JIS), 8K (270 x 390 mm), 16K (195 x 270 mm), 8K (260 x 368 mm), 16K (184 x 260 mm), 8K (273 x 394 mm), 16K (197 x 273 mm), oficio (216 x 340 mm); 11 x 17 in, legal, oficio (8.5 x 13 in), letter, letter-R, executive; Custom media sizes: 210.1 x 148.1 to 297.2 x 431.8 mm (8.27 x 5.83 to 11.7 x 17 in) Optional HCI: A4 and letter only Duplex: A3, A4, A5, B5; Letter; legal; oficio; executive; ledger(B)
Media weights	Tray 1: 60 to 220 g/m ² (16 to 58 lb), 300 g/m ² (80 lb) photo paper only Tray 2, optional trays 3-5, HCI: 60 to 220 g/m ² (16 to 58 lb)
Media types	Plain paper, HP EcoFFICIENT, HP Premium Presentation Matte 120g, HP Brochure Matte 180g, HP Brochure Glossy, HP Advanced Photo Papers, Light 60-74g, Intermediate 85-95g, Mid-Weight 96-110g, Heavy 111-130g, Extra Heavy 131-175g, Cardstock 176-220g, Labels, Letterhead, Envelope, Heavy Envelope, Preprinted, Prepunched, Coloured, Bond, Recycled, Rough
Print languages	HP PCLXL (PCL6), PCL5, native PDF, HP postscript level 3 emulation, PJJ, JPEG, PCLM
Fonts	105 internal TrueType fonts scalable in HP PCL, 92 internal scalable fonts in HP postscript level 3 emulation (Euro symbol built-in); 1 internal Unicode font (Andale Mono WorldType); 2 Internal Windows Vista® 8 fonts (Calibri, Cambria); additional font solutions available via third-party flash memory cards; HP LaserJet fonts and IPDS Emulation available at hp.com/go/laserjetfonts
Connectivity	1 Hi-Speed Device USB 2.0; 2 Hi-Speed USB 2.0 Host; 1 Gigabit Ethernet 10/100/1000T network; 1 Hardware Integration Pocket ¹⁴

HP PageWide Color 755dn

Mobile printing	Standard: HP ePrint, ³⁴ Apple AirPrint, ³⁵ Google Cloud Print 2.0™ Optional: Wireless direct printing, ²⁷ NFC touch-to-print, ³⁶ and Bluetooth Low Energy ²⁸
Network capabilities	Standard: via HP Jetdirect Ethernet embedded print server supports 10Base-T, 100Base-TX, 1000Base-T; 802.3az (EEE) support on Fast Ethernet and Gigabit Ethernet; IPsec (standard) Optional: 802.11b/g/n wireless networking (with purchase of optional HP Jetdirect 2900nw Print Server) ²⁷
Network protocols	IPv4/IPv6: Apple Bonjour Compatible (Mac OS v10.2.4 or higher), SNMPv1/v2c/v3, HTTP, HTTPS, FTP, TFTP, Port 9100, LPD, WS Discovery, IPP, Secure-IPP, IPsec/Firewall; IPv6: DHCPv6, MLDv1, ICMPv6; IPv4: Auto-IP, SLP, Telnet, IGMPv2, BOOTP/DHCP, WINS, IP Direct Mode, WS Print
Security	Secure boot, secure firmware integrity, runtime code integrity, SSL/TLS (HTTPS), LDAP authentication, optional HP and third-party authentication solutions (e.g., badge readers) IPP over TLS; WPA2-enterprise wired, 802.1x wireless authentication (EAP-TLS, LEAP, and PEAP), Pre-Shared Key Authentication for Wireless (PSK), firewall, certificates configuration, control panel lock, password protect EWS, unused protocol and service disablement, Syslog, signed firmware, administrator settings, native authentication and authorisation access control, native colour access restriction, configurable authentication time out, UPD PIN printing, Mopy mode via UPD PIN printing, compatible with optional HP JetAdvantage Security Manager, ¹⁹ SIEM tool compatibility, encrypted print and scan, encrypted storage with secure erase, IPPS
Printer management	HP Web Jetadmin; ¹⁶ Embedded Web Server; HP UPD Printer Administrator Resource Kit; ²⁰ HP Utility (Mac), HP JetAdvantage Security Manager ¹⁷
Compatible operating systems³⁷	Windows® OS: Windows 10 all 32- and 64-bit editions (excluding RT OS for Tablets), Windows 7 all 32- and 64-bit editions, Windows 8/8.1 all 32- and 64-bit editions (excluding RT OS for Tablets), Windows Vista all 32-bit editions (Home Basic, Premium, Professional, etc.), Windows XP SP3 32-bit editions (XP Home, XP Pro, etc.) Mac OS: 10.12 Sierra, OS X 10.10 Yosemite, OS X 10.11 El Capitan Mobile OS: Android™ Linux Boss (5.0), Linux Debian (7.0, 7.1, 7.2, 7.3, 7.4, 7.5, 7.6, 7.7, 7.8, 7.9, 8.0, 8.1, 8.2, 8.3, 8.4, 8.5, 8.6), Linux Fedora (22, 23, 24), Linux Mint (17, 17.1, 17.2, 17.3, 18), Linux Red Hat Enterprise (6.0, 7.0), Linux SUSE (13.2, 42.1), Linux Ubuntu (12.04, 14.04, 15.10, 16.04, 16.10) Other OS: UNIX®
Compatible network operating systems	Citrix MetaFrame Presentation Server 3.0, Citrix MetaFrame XP Presentation Server (Feature Release 1, 2, and 3), Citrix on Windows Server® 2003/2003R2, Citrix on Windows Server 2008/2008R2/2008 R2 SP1, Citrix on Windows Server 2012/2012R2, Citrix Presentation Server 4.0/4.5, Citrix XenApp 5.0 (plus Feature Pack 2 & 3) for Windows Server 2008 Terminal Services 32- and 64-bit, Citrix XenApp 6.0/6.5 (for Windows Server 2008 R2 Terminal Services, 32- and 64-bit), Citrix XenApp 6.0/6.5/7.5 (for Windows Server 2008 R2 SP1 Terminal Services, 32- and 64-bit), Citrix XenApp 7.5 (for Windows Server 2012 and 2012 R2 Terminal Services, 64-bit), Citrix XenDesktop 5.6 (for Windows Server 2008 R2 Terminal Services, 32- and 64-bit), Citrix XenDesktop 5.6/7.0/7.5 (for Windows Server 2008 R2 SP1 Terminal Services, 32- and 64-bit), Citrix XenDesktop 7.0/7.5 (for Windows Server 2012 and 2012 R2 Terminal Services, 64-bit) Novell NetWare 6.5/SP8 Novell Clients novell.com/iprint , Novell iPrint Appliance v1.0, Novell Open Enterprise Server 11/SP1, Novell Open Enterprise Server 2 for Linux, Novell Servers novell.com/iprint Windows Server 2003/2003 R2 32-/64-bit (SP1/SP2) Standard/Enterprise/Datacenter (+ Cluster & Terminal Services), Windows Server 2003/2003 R2 32-bit (SP1/SP2), Standard/Enterprise (+ Cluster & Terminal Services), Windows Server 2008 32-/64-bit (SP2) Standard/Enterprise (+ Cluster & Terminal Services), Windows Server 2008 R2 64-bit (SP1) Standard/Enterprise (+ Cluster & Terminal Services), Windows Server 2008/2008 R2 32-/64-bit (SP1/SP2) Standard/Enterprise/Datacenter (+ Cluster & Terminal Services), Windows Server 2012/2012 R2 64-bit Standard/Foundation/Essentials/Datacenter (+ Cluster & Terminal Services), Windows Server 2016/64-bit Standard/Essential/Datacenter (+ Cluster & Terminal Services)
System requirements, Windows	A compatible operating system (see above); 2 GB available hard disk space; OS hardware requirements (see microsoft.com)
System requirements, Macintosh	A compatible operating system (see above); Internet; 1.2 GB available hard disk space; OS hardware requirements (see apple.com)
Dimensions (width x depth x height)	Operating: 604 x 652 x 467 mm (23.8 x 25.7 x 18.4 in) Maximum: ³⁸ 802 x 694 x 467 mm (31.6 x 27.3 x 18.4 in)
Weight (with print cartridges)	49.9 kg (110 lb)
What's in the box	HP PageWide Color 755dn; HP Setup Ink Cartridges; Installation guide; Support flyer; documentation on CD-ROM; Power cord
Warranty	One-year, on-site warranty, service and support; one-year technical phone support, chat, and email. Go to hp.com/support to learn about HP world-class service and support options in your region.
Software included	HP Device Experience (DXP), HP PCL 6 (XPS) Printer Driver, HP Software Installer/Uninstaller, Mac OS Welcome Screen (directs users to 123.HP.com or OS App Source for printer software), online user manuals

HP PageWide Color 755dn environmental specifications

HP PageWide Color 755dn	
Temperatures³⁹	Recommended operating: 17 to 25° C (63 to 77° F); Operating: 15 to 30° C (59 to 86° F); Storage before initial setup (Non-purged): -40 to 60° C (-40 to 140° F); Storage after initial setup (Purged): 0 to 60° C (32 to 140° F)
Relative humidity	Recommended operating range: 30 to 70% RH; Operating range: 20 to 80% RH; Non-operating range: 5 to 90% RH
Acoustic power emissions⁴⁰	6.9 B(A) (printing at 36 ppm); Ready: inaudible
Acoustic pressure emissions	54 dB(A) (Printing from ready mode, A4 media, simplex colour, General Office mode); Ready: inaudible
Power⁴¹	Power supply type: Built-in power supply; Power requirements: Input voltage: 100 to 240 VAC, 50/60 Hz; Power consumption: 535 watts (max printing), 61 watts (printing), 17 watts (ready), 0.97 watts (auto-on/auto-off) (sleep), 0.3 watts (auto-on/manual off), 0.3 watts (off)
Energy-saving features	HP Auto-On/Auto-Off Technology ⁴²
Environmental specifications	Blue Angel compliant; ENERGY STAR® certified; EPEAT® Silver ⁴³
Safety and regulatory compliance	IEC 60950 -1: 2005+ A1:2009 + A2: 2013/EN 60950-1: 2006+A11: 2009 +A1:2010 +A12:2011 +A2: 2013/+AC:2011; IEC 62479:2010/EN 62479:2010; Australia/New Zealand AS/NZS 60950.1: 2011; Canada/America CAN/CSA-C22.2 No 60950-1-07, Amendment 1:2011, ANSI/UL Std No 60950-1, 2nd Ed.; Low Voltage Directive 2014/35/EU with CE Marking (Europe); Singapore PSB; Korea KCC; Taiwan BSMI; Other safety approvals as required by individual countries
Typical Electricity Consumption (TEC)	1.261 kWh/Week (Blue Angel); 1.015 kWh/Week (ENERGY STAR)

HP PageWide Color MFP 774dn and 779dn technical specifications

	HP PageWide Color MFP 774dn	HP PageWide Color MFP 779dn
Product number	4PZ43B	4PZ45B
Functions	Standard: print, copy, scan; Optional: fax (<i>all models</i>)	
Control panel/data entry	10.9 cm (4.3-inch) pivoting colour touchscreen; Easy access USB ²²	20.3 cm (8.0-inch) pivoting colour touchscreen; Easy-access USB ²²
Print speed (A4 and letter)⁷		
Single-sided	Up to 35/55 ppm, Professional/ General Office mode (black and colour)	Up to 45/65 ppm, Professional/General Office mode (black and colour)
Two-sided	Up to 24 ipm, Professional mode (black and colour)	Up to 31 ipm, Professional mode (black and colour)
First page out	From ready: ²⁹ as fast as 8.4/8.5 seconds (A4/letter, black); as fast as 8.5/8.6 seconds (A4/letter, colour) From sleep: ³⁰ as fast as 12/11.3 seconds (A4/letter, black); as fast as 11.8/11.6 seconds (A4/letter, colour)	From ready: ²⁹ as fast as 7.3/7.5 seconds (A4/letter, black and colour) From sleep: ³⁰ as fast as 10.5/10 seconds (A4/letter, black); as fast as 10.6 seconds (A4/letter, colour)
Print resolution	Black: Up to 1200 x 1200 optimised dpi from 600 x 600 input dpi (on Unspecified, Plain, HP Premium Presentation Matte, and HP Brochure Matte); Colour: Up to 2400 x 1200 optimised dpi from 600 x 600 input dpi (on HP Advanced Photo Papers)	
Scanning resolution	Up to 600 dpi (<i>all models</i>)	
ADF scan speed (A4 and letter)²¹		
Single-sided	Up to 60 ppm (black and colour) (<i>all models</i>)	
Two-sided	Up to 120 ipm (black and colour) (<i>all models</i>)	
Features		
Printing	HP PageWide Technology with pigmented inks, HP EasyColor, print preview, automatic two-sided printing, print multiple pages per sheet (2, 4, 6, 9, 16), collation, booklet printing, cover pages, tray selection, scalability, N-up, N or Z-ordering, content orientation, edge-to-edge, portrait/landscape orientation, high-quality greyscale and black ink only, General Office/Professional/Presentation dpi print modes, control panel shortcuts, store print jobs; print Microsoft Word and PowerPoint files from easy-access USB	
Scanning	Flatbed scanner: 297 x 432 mm (11.7 x 17 in); 100-sheet ADF with single-pass, two-sided scanning up to 297 x 864 mm (11.7 x 34 in); ²⁴ Advanced features: optimise text/picture, image adjustments, job build, output quality setting, selectable scan resolution 75 to 600 dpi, auto detect colour, edge erase, job notification, blank page suppression, ID Scan, HP Quick Sets; bit depth: 24 bit (colour); 8-bit (grey); Scan file type supported by software: Bitmap (.bmp), JPEG (.jpg), PDF (.pdf), PNG (.png), Rich Text (.rtf), Searchable PDF (.pdf), Text (.txt), TIFF (.tif)	
Digital sending	Scan to email with LDAP email address lookup, scan to network folder, scan to USB, scan to FTP, send to Internet fax, send to LAN fax, blank page removal, edge erase, auto colour sense, scan to Microsoft SharePoint ⁴⁴	
File formats	PDF, JPEG, TIFF, XPS, PDF/A; Scan to easy-access USB: ²² PDF, JPEG, TIFF, XPS, PDF/A; Print from easy-access USB: ²² PDF, PS, print ready files (.prn, .pcl, .cht)	
Copying	Copy speed: Up to 35 copies per minute (cpm) (black and colour) and first copy out as fast as 10.5/10.3 seconds (black/colour) ⁴⁵	Copy speed: Up to 45 cpm (black and colour) and first copy out as fast as 8.3/9.8 seconds (black/colour) ⁴⁵
Optional faxing	Auto-scale, reduce/enlarge from scanner glass (25 to 400%), collate, auto-colour detection, two-sided copying, job build, image adjustments (darkness, background clean-up, sharpness); Copy resolution: Up to 600 x 600 dpi Fax speed: ⁴⁶ 33.6 kbps/3 seconds per page (A4/letter); fax forwarding, receive fax polling, broadcasting to up to 210 locations, speed dial up to 1000 numbers, each with 210 destinations, auto-fax reduction, auto-redialing, stored faxes, fax archiving, scale-to-fit, fax address book, LAN/Internet fax, fax number confirmation, holiday fax schedule Fax resolution: Black: 204 x 98 dpi (standard), 204 x 196 dpi (fine); Colour: 300 x 300 dpi (400 x 400 dpi for received faxes only)	
Processor	1.2 GHz (<i>all models</i>)	
Memory	2816 MB/3584 MB (standard/maximum) ⁴⁷ (<i>all models</i>)	
Storage	eMMC solid state drive (SSD) for printer operating system and job storage	

	HP PageWide Color MFP 774dn	HP PageWide Color MFP 779dn
Durability ratings		
RMPV ³²	2,500 pages to as high as 15,000 pages	2,500 pages to as high as 20,000 pages
RMSV ²⁵	2,000 pages to as high as 50,000 pages (<i>all models</i>)	
Duty cycle ³³	Up to 75,000 pages	Up to 100,000 pages
Media specifications		
Input capacity	Up to 650 sheets (up to 4,650 sheets maximum ¹¹) (<i>all models</i>) Tray 1: up to 100 sheets Tray 2: up to 550 sheets	
Output capacity	Up to 500 sheets	Up to 500 sheets
Two-sided printing	Automatic (<i>all models</i>)	
Media sizes	<p>Tray 1: A3, A4, A4-R, A5, A5-R, A6, RA3, RA4, SRA4, B4, B5 (JIS), 8K (270 x 390 mm), 16K (195 x 270 mm), 8K (260 x 368 mm), 16K (184 x 260 mm), 8K (273 x 394 mm), 16K (197 x 273 mm), oficio (216 x 340 mm), envelopes (B5, C5, C6); 12 x 18 in, 11 x 17 in, legal, oficio (8.5 x 13 in), letter, letter-R, executive, statement, 5 x 8 in, 5 x 7 in, 4 x 6 in, envelope #10; Custom media sizes: 99.1 x 127 to 304.8 x 457.2 mm (3.9 x 5.83 to 12 x 18 in)</p> <p>Tray 2: A3, A4, A4-R, A5, SRA4, B4, B5 (JIS), 8K (270 x 390 mm), 16K (195 x 270 mm), 8K (260 x 368 mm), 16K (184 x 260 mm), 8K (273 x 394 mm), 16K (197 x 273 mm), oficio (216 x 340 mm); 11 x 17 in, legal, oficio (8.5 x 13 in), letter, letter-R, executive; custom media sizes: 210.1 x 148.1 to 297.2 x 431.8 mm (8.27 x 5.83 to 11.7 x 17 in)</p> <p>Optional 1x550 tray, 1x550 tray/stand, 3x550 tray/stand: A3, A4, A4-R, A5, SRA4, B4, B5 (JIS), 8K (270 x 390 mm), 16K (195 x 270 mm), 8K (260 x 368 mm), 16K (184 x 260 mm), 8K (273 x 394 mm), 16K (197 x 273 mm), oficio (216 x 340 mm); 11 x 17 in, legal, oficio (8.5 x 13 in), letter, letter-R, executive; custom media sizes: 210.1 x 148.1 to 297.2 x 431.8 mm (8.27 x 5.83 to 11.7 x 17 in)</p> <p>Optional HCl: A4 and letter only</p> <p>Duplex: A3, A4, A5, B5; Letter; legal; oficio; executive; ledger(B)</p> <p>ADF: A3, ledger, B4-JIS, A4, B5-JIS, A5, B6-JIS, A6; 11.7 x 34 in, legal, 8.5 x 13 in, letter</p>	
Media weights	<p>Tray 1: 60 to 220 g/m² (16 to 58 lb), 300 g/m² (80 lb) photo paper only</p> <p>Tray 2, optional trays 3-5, optional HCl: 60 to 220 g/m² (16 to 58 lb)</p> <p>ADF: 60 to 120 g/m² (16 to 32 lb), plain paper; 125 to 300 g/m² (33 to 80 lb), photo; 75 to 90 g/m² (20 to 24 lb), envelope; 120 to 180 g/m² (32 to 48 lb), brochure; 163 g/m² (90 lb), card</p>	
Media types	Plain paper, HP EcoFFICIENT, HP Premium Presentation Matte 120g, HP Brochure Matte 180g, HP Brochure Glossy, HP Advanced Photo Papers, Light 60-74g, Intermediate 85-95g, Mid-Weight 96-110g, Heavy 111-130g, Extra Heavy 131-175g, Cardstock 176-220g, Labels, Letterhead, Envelope, Heavy Envelope, Preprinted, Prepunched, Coloured, Bond, Recycled, Rough	
Print languages	HP PCLXL (PCL6), PCL5, native PDF, HP postscript level 3 emulation, PJI, JPEG, PCLM	
Fonts	105 internal TrueType fonts scalable in HP PCL, 92 internal scalable fonts in HP postscript level 3 emulation (Euro symbol built-in); 1 internal Unicode font (Andale Mono WorldType); 2 Internal Windows Vista 8 fonts (Calibri, Cambria); additional font solutions available via third-party flash memory cards; HP LaserJet fonts and IPDS Emulation available at hp.com/go/laserjetfonts	
Connectivity	1 Hi-Speed Device USB 2.0; 2 Hi-Speed USB 2.0 Host (1 easy-access and 1 external accessible); 1 Gigabit Ethernet 10/100/1000T network	Plus: Hardware Integration Pocket ¹⁴
Mobile printing	Standard: HP ePrint, ³⁴ Apple AirPrint, ³⁵ Mopria-certified, Google Cloud Print 2.0 Optional: Wireless direct printing, ²⁷ NFC touch-to-print, ³⁶ and Bluetooth Low Energy ²⁸	
Network capabilities	Standard: via HP Jetdirect Ethernet embedded print server supports: 10Base-T, 100Base-TX, 1000Base-T; 802.3az (EEE) support on Fast Ethernet and Gigabit Ethernet; IPsec Optional: 802.11b/g/n wireless networking (with purchase of optional HP Jetdirect 2900nw Print Server) ²⁷	
Network protocols	IPv4/IPv6: Apple Bonjour Compatible (Mac OS v10.2.4 or higher), SNMPv1/v2c/v3, HTTP, HTTPS, FTP, TFTP, Port 9100, LPD, WS Discovery, IPP, Secure-IPP, IPsec/Firewall; IPv6: DHCPv6, MLDv1, ICMPv6; IPv4: Auto-IP, SLP, Telnet, IGMPv2, BOOTP/DHCP, WINS, IP Direct Mode, WS Print	

Security	Secure boot, secure firmware integrity, runtime code integrity, SSL/TLS (HTTPS), LDAP authentication, optional HP and third-party authentication solutions (e.g., badge readers) IPP over TLS; WPA2-enterprise wired, 802.1x wireless authentication (EAP-TLS, LEAP, and PEAP), Pre-Shared Key Authentication for Wireless (PSK), firewall, certificates configuration, control panel lock, password protect EWS, unused protocol and service disablement, Syslog, signed firmware, administrator settings, native authentication and authorisation access control, native colour access restriction, configurable authentication time out, UPD PIN printing, Mopy mode via UPD PIN printing, compatible with optional HP JetAdvantage Security Manager, ¹⁷ SIEM tool compatibility, encrypted print and scan, encrypted storage with secure erase, IPPS	
Printer management	Optional HP JetAdvantage Security Manager; ¹⁷ HP SNMP Proxy Agent; HP Web Jetadmin Software; ¹⁶ Printer Administrator Resource Kit for HP Universal Print Driver ²⁰	
Compatible operating systems³⁷	<p>Windows OS: Windows 10 all 32- and 64-bit editions (excluding RT OS for Tablets), Windows 7 all 32- and 64-bit editions, Windows 8/8.1 all 32- and 64-bit editions (excluding RT OS for Tablets), Windows Vista all 32-bit editions (Home Basic, Premium, Professional, etc.), Windows XP SP3 32-bit editions (XP Home, XP Pro, etc.)</p> <p>Mac OS: 10.12 Sierra, OS X 10.10 Yosemite, OS X 10.11 El Capitan</p> <p>Mobile OS: Android</p> <p>Linux Boss (5.0), Linux Debian (7.0, 7.1, 7.2, 7.3, 7.4, 7.5, 7.6, 7.7, 7.8, 7.9, 8.0, 8.1, 8.2, 8.3, 8.4, 8.5, 8.6), Linux Fedora (22, 23, 24), Linux Mint (17, 17.1, 17.2, 17.3, 18), Linux Red Hat Enterprise (6.0, 7.0), Linux SUSE (13.2, 42.1), Linux Ubuntu (12.04, 14.04, 15.10, 16.04, 16.10)</p> <p>Other OS: UNIX</p>	
Compatible network operating systems	<p>Citrix MetaFrame Presentation Server 3.0, Citrix MetaFrame XP Presentation Server (Feature Release 1, 2, and 3), Citrix on Windows Server 2003/2003R2, Citrix on Windows Server 2008/2008R2/2008 R2 SP1, Citrix on Windows Server 2012/2012R2, Citrix Presentation Server 4.0/4.5, Citrix XenApp 5.0 (plus Feature Pack 2 & 3) for Windows Server 2008 Terminal Services 32- and 64-bit, Citrix XenApp 6.0/6.5 (for Windows Server 2008 R2 Terminal Services, 32- and 64-bit), Citrix XenApp 6.0/6.5/7.5 (for Windows Server 2008 R2 SP1 Terminal Services, 32- and 64-bit), Citrix XenApp 7.5 (for Windows Server 2012 and 2012 R2 Terminal Services, 64-bit), Citrix XenDesktop 5.6 (for Windows Server 2008 R2 Terminal Services, 32- and 64-bit), Citrix XenDesktop 5.6/7.0/7.5 (for Windows Server 2008 R2 SP1 Terminal Services, 32- and 64-bit), Citrix XenDesktop 7.0/7.5 (for Windows Server 2012 and 2012 R2 Terminal Services, 64-bit)</p> <p>Novell NetWare 6.5/SP8 Novell Clients novell.com/iprint, Novell iPrint Appliance v1.0, Novell Open Enterprise Server 11/SP1, Novell Open Enterprise Server 2 for Linux, Novell Servers novell.com/iprint</p> <p>Windows Server 2003/2003 R2 32-/64-bit (SP1/SP2) Standard/Enterprise/Datacenter (+ Cluster & Terminal Services), Windows Server 2003/2003 R2 32-bit (SP1/SP2), Standard/Enterprise (+ Cluster & Terminal Services), Windows Server 2008 32-/64-bit (SP2) Standard/Enterprise (+ Cluster & Terminal Services), Windows Server 2008 R2 64-bit (SP1) Standard/Enterprise (+ Cluster & Terminal Services), Windows Server 2008/2008 R2 32-/64-bit (SP1/SP2) Standard/Enterprise/Datacenter (+ Cluster & Terminal Services), Windows Server 2012/2012 R2 64-bit Standard/Foundation/Essentials/Datacenter (+ Cluster & Terminal Services), Windows Server 2016/64-bit Standard/Essential/Datacenter (+ Cluster & Terminal Services)</p>	
System requirements, Windows	A compatible operating system (see above); 2 GB available hard disk space; OS hardware requirements (see microsoft.com)	
System requirements, Macintosh	A compatible operating system (see above); Internet; 1.2 GB available hard disk space; OS hardware requirements (see apple.com)	
Dimensions (width x depth x height)	Operating: 604 x 604 x 664 mm (23.8 x 23.8 x 26.2 in) Maximum: ³⁸ 1270 x 1027 x 946 mm (50.0 x 40.4 x 37.3 in)	Operating: 604 x 604 x 664 mm (23.8 x 23.8 x 26.2 in) Maximum: ³⁸ 1270 x 1027 x 946 mm (50.0 x 40.4 x 37.3 in)
Weight (with print cartridges)	64.8 kg (142.8 lb)	66.6 kg (146.5 lb)
What's in the box	HP PageWide Color MFP; HP Setup Ink Cartridges; Installation guide; Support flyer; documentation on CD-ROM; Power cord	
Warranty	One-year, on-site warranty, service and support; one-year technical phone support, chat, and email. Go to hp.com/support to learn about HP world-class service and support options in your region.	
Software included⁴⁸	HP Device Experience (DXP), HP PCL 6 (XPS) Printer Driver, HP Software Installer/Uninstaller, Mac OS Welcome Screen (directs users to 123.HP.com or OS App Source for printer software), online user manuals	

HP PageWide Color MFP 774dn and 779dn environmental specifications

	HP PageWide Color MFP 774dn	HP PageWide Color MFP 779dn
Temperatures³⁹	Recommended operating: 17 to 25° C (63 to 77° F); Operating: 15 to 30° C (59 to 86° F); Storage before initial setup (Non-Purged): -40 to 60° C (-40 to 140° F); Storage after initial setup (Purged): 0 to 60° C (32 to 140° F)	
Relative humidity	Recommended operating range: 30 to 70% RH; Operating range: 10 to 80% RH; Non-operating range: 10 to 80% RH	
Acoustic power emissions⁴⁰	Ready mode: Inaudible Active print: 6.7 B(A) Active copy: 6.7 B(A) Active scan: 6.7 B(A)	Ready mode: Inaudible Active print: 6.7 B(A) Active copy: 6.7 B(A) Active scan: 6.7 B(A)
Acoustic pressure emissions	Ready mode: Inaudible; Active print: 53 dB(A) (printing at 45 ipm); Active scan: 52 dB(A)	
Power⁴¹	Power supply type: Built-in power supply; Power requirements: Input voltage: 100 to 240 VAC, 50/60 Hz; Power consumption: 525 watts (max. printing), 78 watts (printing), 30 watts (ready), 1.22 watts (sleep), 0.2 watts (auto-off/manual-on), 0.2 watts (off)	
Energy-saving features	HP Auto-On/Auto-Off Technology ⁴² (<i>both models</i>)	
Environmental specifications	Blue Angel compliant; ENERGY STAR certified; EPEAT Gold ⁴³ (<i>both models</i>)	
Safety and regulatory compliance	IEC 60950 -1: 2005+ A1:2009 + A2: 2013/EN 60950-1: 2006+A11: 2009 +A1:2010 +A12:2011 +A2: 2013/+AC:2011; IEC 62479:2010/EN 62479:2010; Australia/New Zealand AS/NZS 60950.1: 2011; Canada/America CAN/CSA-C22.2 No 60950-1-07, Amendment 1:2011, ANSI/UL Std No 60950-1, 2nd Ed.; Low Voltage Directive 2014/35/EU with CE Marking (Europe); Singapore PSB; Korea KCC; Taiwan BSMI; Other safety approvals as required by individual countries.	
Typical Electricity Consumption (TEC)	1.261 kWh/Week (Blue Angel); 1.25 kWh/Week (ENERGY STAR)	

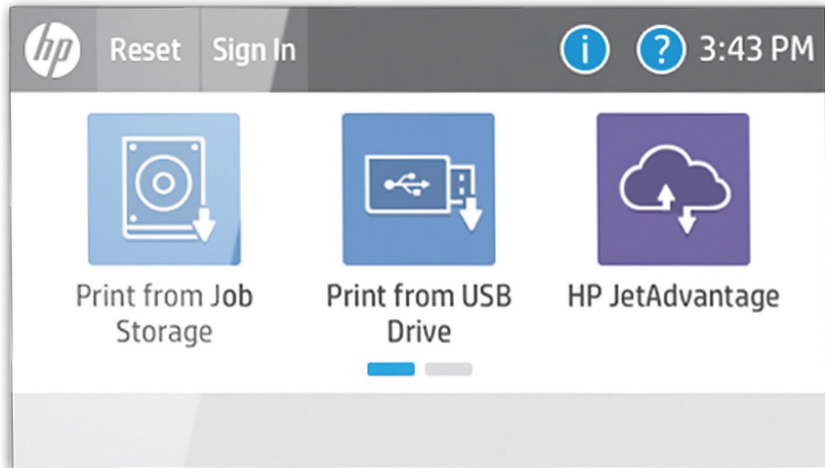
Appendix A: Control panel features

Upgrade to a modern interface

The HP PageWide Color 755dn, and MFP 774dn and 779dn models are powered by HP FutureSmart firmware. The modern, tablet-like interface (20.3 cm (8.0-inch) on the MFP 779dn model, 10.9 cm (4.3-inch) on the 755dn printer and MFP 774dn model) keeps things simple and intuitive across your fleet of devices. A scalable control panel interface improves future extensibility and allows for customisation, along with a robust set of new apps and usability features. You can even customise with your own wallpaper image and company logo. The new Message Center, with more detailed information and helpful animations, makes it easy to address device events. The simplified home screen displays just a few core apps by default (three apps for products without fax). Additional apps are easily accessed by swiping right to left, like with a smartphone or tablet.



To access additional apps on the new printer user interface, simply swipe right to left

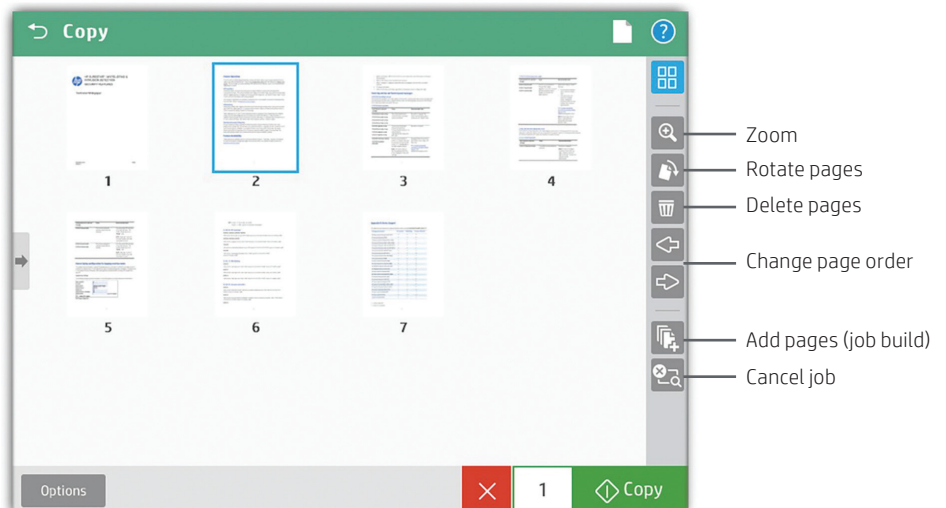


Edit jobs right at the MFP

The MFP control panel features an enhanced image preview—now for both copies and scans. Right from the MFP 779dn's 20.3 cm (8.0-inch) colour touchscreen control panel, you can easily preview and edit scans before sending them. You can apply changes (like rotating) to a single page, or to multiple pages at once. Batch separation allows users to create separate PDF or PDF/A files from scanned pages.



The new MFP user interface enables **swipe**, **rotate**, and **drag-and-drop** capabilities



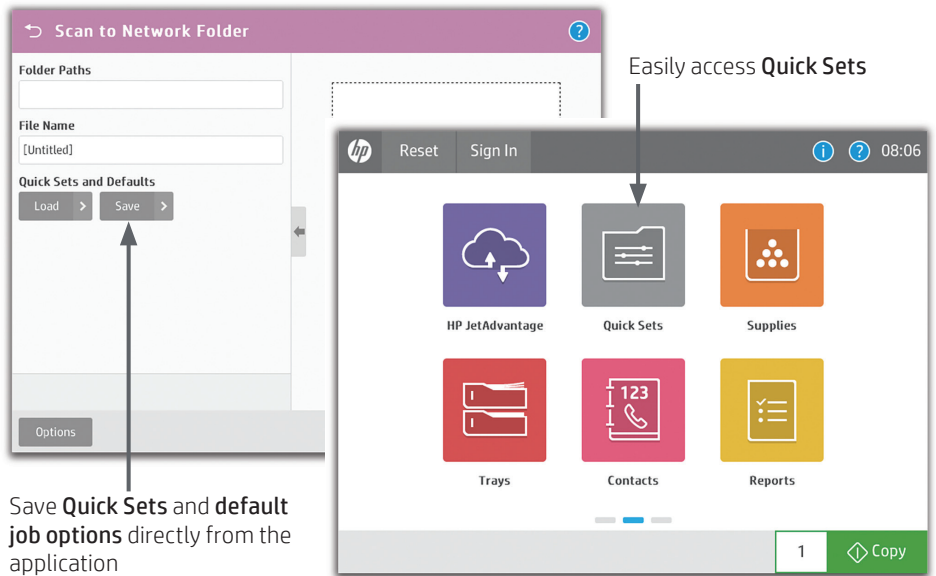
You can start a **preview** prior to committing to the copy job

Use Quick Sets to launch automated workflows

The digital sending capability on the MFP models allows users to route documents to a variety of destinations like email recipients, network folders, fax, FTP, a USB device, or Microsoft SharePoint.

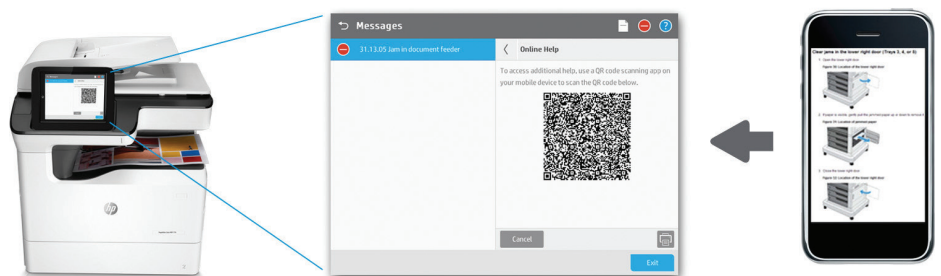
Quick Sets automate all of the steps of a complicated workflow and provide easy access to the configurations you use most, such as page size, resolution, and file format. You can also specify security settings, such as encrypted PDFs to be delivered through encrypted and signed emails.

Help users find what they need by moving individual Quick Sets to any screen or folder using the home screen customisation feature. With Quick Sets, IT can promote or block access to certain device features. Calls to the helpdesk can be reduced when users have everything they need and are restricted from accessing settings they shouldn't tamper with.



Troubleshoot with ease

The HP PageWide Color 755dn printer and MFP 774dn and 779dn models can help save your IT department valuable time when it comes to troubleshooting problems. The Remote Control Panel allows users to operate the user interface remotely, so IT can troubleshoot problems without running to the printer or MFP. Users can also quickly troubleshoot technical issues with HP's innovative, cloud-based Online Help services that are relevant and up to date. Easily solve problems from your PC or mobile device. A Quick Response (QR) code on the touchscreen links to Online Help using smart phones and tablets. You can also find these links in the HP Embedded Web Server event log.



- ¹ High-yield cartridges are not included in printer purchase; purchase separately. Learn more at hp.com/go/learnaboutsplies.
- ² Comparison based on printing in Professional mode.
- ³ Fewer service parts claim based on HP analysis of leading in-class A3 colour laser printers and MFPs as of February 2018; calculations use publicly available and/or published manufacturer rated yields for long-life consumables and assume 600,000 pages printed (using a 60% black/40% colour ratio). Learn more at hp.com/go/pagewideclaims.
- ⁴ Energy claim based on TEC data reported on energystar.gov as of February 2018. Data normalised to determine energy efficiency of in-class A3 colour laser printers and MFPs with published speeds of 20 to 80 ppm, excluding other HP PageWide products. Subject to device settings. Actual results may vary.
- ⁵ Programme availability varies. For more information, visit hp.com/recycle.
- ⁶ Comparison of HP PageWide A3 devices with the majority of in-class colour ink/laser MFPs (\$3,000-\$10,299 and €2,820-€10,199), and colour ink/laser single function printers (\$1,500-\$4,299 and €1,410-€4,099) as of April 2018 excluding other HP PageWide products; competitive set based on market share data as reported by IDC as of Q4 2017, MSRP data provided by gap intelligence and/or Buyers Lab. HP PageWide speeds based on General Office mode and exclude first page. Learn more at hp.com/go/printerspeeds.
- ⁷ The HP PageWide Color MFP 779dn prints up to 45/65 ppm (Professional mode/General Office mode), A4 and letter, simplex. The HP PageWide Color 755dn printer and MFP 774dn models print up to 35/55 ppm (Professional mode/GO mode), A4 and letter, simplex. ISO speeds measured using ISO/IEC 24734. Excludes first page or first set of ISO test pages. For details see hp.com/go/printerclaims.
- ⁸ Fax capability is optional on all MFP models.
- ⁹ The HP PageWide Color MFP 779dn model has a 20.3 cm (8.0-inch) touchscreen. The HP PageWide Color 755dn printer and MFP 774dn have a 10.9 cm (4.3-inch) touchscreen.
- ¹⁰ Standard and optional paper-handling accessories vary by model. See "Series at a glance" tables, pages 7 and 9, for details.
- ¹¹ Purchase of optional paper tray(s) required to reach maximum input capacity.
- ¹² HP Proximity Card Reader (CZ208A) is available for separate purchase for select HP devices with Hardware Integration Pocket (HIP) and touchscreen display. If you use an optional proximity card reader at the device to authenticate and retrieve your print job, an additional solution such as HP Access Control is required.
- ¹³ Some features require additional purchase. A FutureSmart service pack update may be required to activate security features. Learn more at hp.com/go/printsecurity.
- ¹⁴ Solutions deployed through the Hardware Integration Pocket (HIP) may require additional purchase. The HIP is supported on all models except the 774dn.
- ¹⁵ Use of the standard HP Trusted Platform Module accessory (MFP 774dn and 779dn models only) may require a firmware upgrade.
- ¹⁶ HP Web Jetadmin is available for download at no additional charge at hp.com/go/wja.
- ¹⁷ HP JetAdvantage Security Manager must be purchased separately. For details, see hp.com/go/securitymanager.
- ¹⁸ HP JetAdvantage Secure Print works with any network-connected printer or MFP. On-device authentication is available for many HP LaserJet, PageWide, and OfficeJet Pro devices and selected non-HP devices. Some devices may require a firmware upgrade. Internet connection required for cloud storage and retrieval of print jobs. Print-job release from a mobile device requires a network connection and QR code. For more information and a list of supported printers and MFPs, see hp.com/go/JetAdvantageSecurePrint.
- ¹⁹ Colour access control capabilities vary from device to device.
- ²⁰ The HP Universal Print Driver is available for download at no additional charge at hp.com/go/upd.
- ²¹ Scan speed measured from ADF at default 300 dpi (black-and-white, greyscale, and colour). Actual processing speeds may vary depending on scan resolution, network conditions, computer performance, and application software.
- ²² An administrator must enable the easy-access USB port before use.
- ²³ Feature works with Microsoft Word® and PowerPoint® 2003 and later. Only Latin language fonts are supported.
- ²⁴ The 100-sheet ADF can scan documents up to 297 x 432 mm (11.7 x 17 in), as well as up to 297 x 864 mm (11.7 x 34 in) when "long scan size" is selected.
- ²⁵ The HP PageWide Color MFP 774dn model has a recommended monthly scan volume (RMSV) of 2,500 to 15,000 pages. The MFP 779dn model have an RMSV of 2,500 to 20,000 pages. HP recommends that the number of scanned pages per month be within the stated range for optimum device performance, based on factors including supplies replacement intervals and device life over an extended warranty period.
- ²⁶ Requires an Internet connection to the printer. Services may require registration. App availability varies by country, language, and agreements. For details, see hpconnected.com.
- ²⁷ All models can add wireless networking with the purchase of the optional HP Jetdirect 2900nw Print Server. Wireless performance is dependent on physical environment and distance from access point, and may be limited during active VPN connections. Wireless operations are compatible with 2.4 GHz routers only.
- ²⁸ Bluetooth® Low Energy is optional on all models. Bluetooth is a trademark owned by its proprietor and used by HP Inc. under license.
- ²⁹ Measured using ISO/IEC 17629. Exact speed for first page out varies depending on the system configuration, software application, driver, and document complexity. Learn more at hp.com/go/printerclaims.
- ³⁰ Measured after 15 minutes in sleep. Exact speed varies depending on the system configuration, software application, driver, document complexity, and time in sleep.
- ³¹ Upgradeable to 2560 MB with optional DIMM.
- ³² HP recommends that the number of printed pages per month be within the stated range for optimum device performance, based on factors including supplies replacement intervals and device life over an extended warranty period.
- ³³ Duty cycle is defined as the maximum number of pages per month of imaged output. HP recommends that the number of printed pages per month be within the stated range for optimum device performance, based on factors including supplies replacement intervals and device life over an extended warranty period.
- ³⁴ Printer requires ePrint account registration. App or software may be required. Wireless operations are compatible with 2.4 GHz operations only. Learn more at hp.com/go/mobileprinting.
- ³⁵ Supports the following devices running iOS 4.2 or later: iPad, iPad 2, iPhone (3GS or later), iPod touch (3rd generation or later). Works with HP's AirPrint-enabled printers and requires the printer be connected to the same network as your iOS device. Wireless performance is dependent on physical environment and distance from the access point.
- ³⁶ Touch-to-print capability is optional for all models with the purchase of the optional HP Jetdirect 3000w NFC/Wireless Direct Accessory. Mobile device must support Near Field Communication (NFC)-enabled printing. For more information, see hp.com/go/businessmobileprinting.
- ³⁷ Full solution software available only for Windows 7 and newer, UPD software available only for Windows 7 and newer, HP Software for Mac and Windows is no longer included on the CD, but can be downloaded from 123.hp.com, Legacy Windows Operating Systems (XP, Vista, and equivalent servers) get print and scan drivers only with a reduced feature set, Windows RT OS for Tablets (32- and 64-bit) uses a simplified HP print driver built into the RT OS.
- ³⁸ Maximum dimensions of the device are measured with MP tray down with extension out, main tray extended, and output tray extension in legal position.

-
- ³⁹ If stored below the lowest specified operating temperature, unit must slowly warm up to an approved operating temperature (HP recommends waiting 24 hours at approved operating temperature prior to using the printer).
- ⁴⁰ Printing or scanning from ready mode, A4 media, simplex colour, General Office mode. Acoustic values are subject to change. For current information, see hp.com/support.
- ⁴¹ Power requirements are based on the country/region where the printer is sold. Do not convert operating voltages. This will damage the printer and void the product warranty.
- ⁴² HP Auto-On/Auto-Off Technology capabilities are subject to printer and settings.
- ⁴³ EPEAT® registered where applicable. EPEAT registration varies by country. See epeat.net for registration status by country.
- ⁴⁴ An administrator must enable the Scan to SharePoint feature before use.
- ⁴⁵ First Copy Out and Copy Speed measured using ISO/IEC 29183, excludes first set of test documents. For more information see hp.com/go/printerclaims. Exact speed varies depending on the system configuration, software application, driver, and document complexity.
- ⁴⁶ Based on standard ITU-T test image #1 at standard resolution and MMR encoding, the HP fax device can transmit at 3 sec/page for V.34 and 6 sec/page for V.17.
- ⁴⁷ Internal DDR3 DRAM contained on the controller and Scanner board.
- ⁴⁸ Scan software not included in box. HP Scan and TWAIN driver available for download: hp.com/support.
- ⁴⁹ Cartridge yields established using ISO/IEC test standards. Actual yields and costs vary considerably depending on images printed, number of colour pages printed, and other factors.
- ⁵⁰ Availability dependent on firmware or software updates or upgrades.
- ⁵¹ Online Help must be enabled on the printer or MFP. Mobile device must have an Internet connection to access online services.

Sign up for updates
hp.com/go/getupdated



© Copyright 2018 HP Development Company, L.P. The information contained herein is subject to change without notice. The only warranties for HP products and services are set forth in the express warranty statements accompanying such products and services. Nothing herein should be construed as constituting an additional warranty. HP shall not be liable for technical or editorial errors or omissions contained herein.

Apple, AirPrint, iPad, iPhone, iPod touch, and Bonjour are trademarks of Apple Inc. Bluetooth is a trademark owned by its proprietor and used by HP Inc. under license. ENERGY STAR is a registered trademark owned by the U.S. Environmental Protection Agency. Android and Google Cloud Print are trademarks of Google Inc. Microsoft, SharePoint, Windows, Windows Vista, Windows Server are U.S. registered trademarks of the Microsoft group of companies. UNIX is a registered trademark of The Open Group.

4AA7-3618EEE, December 2018

